



SECOND FLOOR PLAN

PRE-ENGINEERED  
AUBURN CHALET

RESIDENCE FOR:

PAGE TITLE

TITLE

SCALE: 1/4" = 1'-0"

TRANSIT

TRANSIT

SHEET:

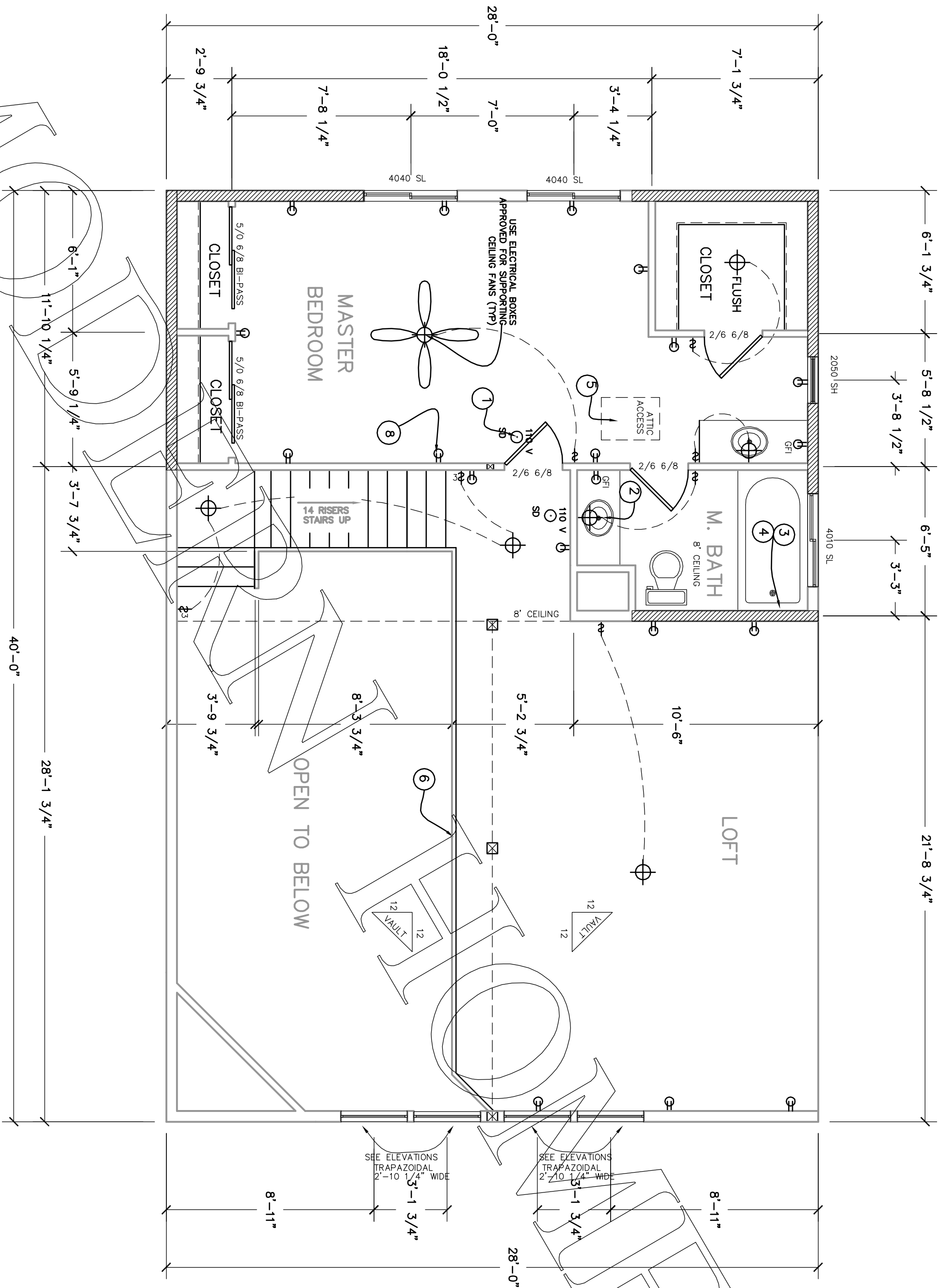
3

KEY NOTES:

1. SMOKE DETECTORS SHALL RECEIVE THEIR PRIMARY POWER FROM THE BUILDING WIRING AND SHALL BE EQUIPPED WITH A BATTERY BACKUP. THE ALARM SHALL BE AUDIBLE IN ALL SLEEPING AREAS OF THE HOME. SMOKE DETECTORS SHALL BE INTERCONNECTED.
2. FULL BATH MUST HAVE AT LEAST ONE LINEN CLOSET WITH LINENS WITH AN EFFICIENCY OF AT LEAST 40 LUMENS PER WATT.
3. SHOWER AND/OR TUB-SHOWER COMBINATIONS SHALL BE INSTALLED WITH AN AUTOMATIC THERMOSTATIC MIXING VALVE TYPE. THE WATER TEMPERATURE MAXIMUM IS A SETTING OF 120°F.
4. SHOWER AND TUB/SHOWER WALLS SHALL BE FINISHED WITH A HARD, NON-ABSORBENT SURFACE TO A HEIGHT OF NOT LESS THAN 70" ABOVE THE DRAIN INLET. THE FLOOR SHALL BE FINISHED TO A MINIMUM OF 102.4 SQ IN. WITH A MINIMUM DIMENSION OF 30".
5. A 22" X 30" ATTIC ACCESS IS REQUIRED FOR ALL ATTICS WHICH ARE MORE THAN 30" IN HEIGHT. THE ATTIC ACCESS SHALL BE LOCATED ABOVE A CLOSET SHELF OR POLE. 30" MINIMUM HEADROOM IS REQUIRED ABOVE THE ACCESS. ATTICS WITH EQUIPMENT NEED A 30" X 30" ACCESS. EXCEPTIONS: THE ACCESS MAY BE 22" X 30" WHEN TRUSSES ARE USED FROM THE FLOOR TO THE CEILING. THE ACCESS MAY BE REMOVED THROUGH THE OPENING.
6. 42" HIGH RAILING WITH NO OPENING LARGE ENOUGH FOR A 4" SPHERE TO PASS THROUGH.
7. PLUMBING FIXTURES AND PLUMBING FITTINGS SHALL MEET THE FOLLOWING STANDARDS:  
WATER CLOSETS 22.2 GPM MAX  
WATER CLOSETS 11.6 GPM MAX  
SHOWER HEADS 2.5 GPM MAX
8. ALL RECEPTACLE OUTLETS INSTALLED IN BEDROOMS TO BE PROTECTED BY AN ARC-FAULT CIRCUIT INTERRUPTER.

LEGEND

- \$ SWITCH  
⊕ RECEPTACLE  
⊙ LIGHT



SECOND FLOOR PLAN

SCALE 1/4" = 1'-0"